

KORG nano KONTROL 2 Plug-in v1.0 DAZ Studio 4.6 to 4.11 for Win 10



Updated on 6th August 2018

Can be use with Pose-It, Walk-It, Sprite-It, & Grow-It.

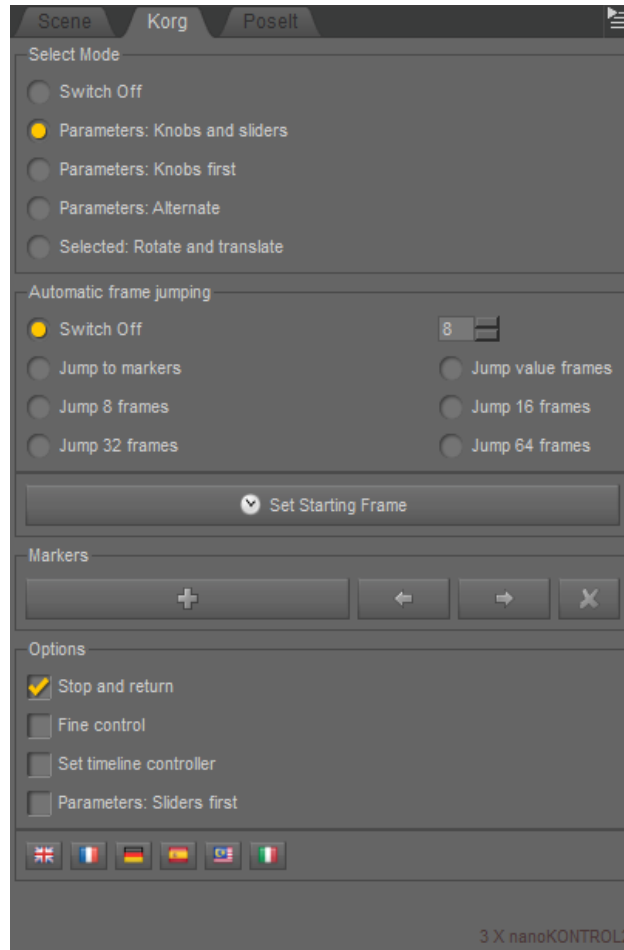
About

This plug-in allows you to use your KORG nanoKontrol2 with DAZ Studio parameters or a selected node that has a rotate or translate. All plug-ins made by Generation X will also work with this device. You can use up to three KORG nanoKontrol2 as you wish for maximum control of DAZ studio, recommended two.

Extra functions includes slow-play, set and navigate KORG markers, auto key-frame-jumping on the time line and return back from a play.



KORG PLUG-IN WINDOW PANE



Allows you to connect or disconnect this device on other Generation X plug-ins. *See Poselt*



This plug-in needs to be paid for, if the padlock icon did not show up at start-up then you have an illegal copy and you won't be able to update. An email address is required to unlock the plug-in and to enable key-code recovery sent to you by website.

Markers buttons

Use to bookmark & jump to a location on the timeline same results happen when pressing the button on the KORG nano Kontrol2.

Options

Stop and return. Timeline bar will return when stopped.

Fine control-mode. Less movement from knobs and sliders.

Set timeline controller. Controls the current frame, click and move any knob, normally the 1st knob.

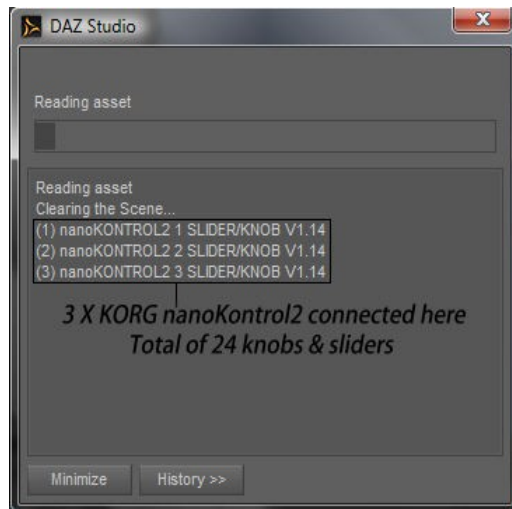
Parameter Sliders 1sts. The order of the selected parameter will be sliders.

Language Bar

Click on flag icons to select your language.

Trouble Shooting Multi MIDI Device's

Connection to KORG controller happens when something is loaded in to the scene.



If you have more than one controller connected and the others fail to show!

1. Reinstall the KORG drivers.
2. Use the KORG Controller Editor software and set three different global-midi-channels normally 1, 2, 3, 4.
3. Set control-mode to CC
4. If you don't want the LEDs lighting up, set LED Mode to external.

